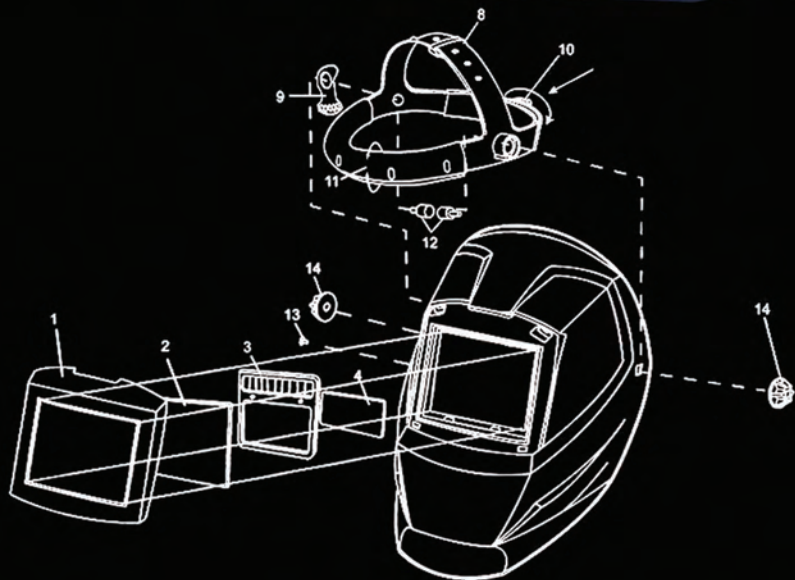


UNI-MIG AUS-ACE

Auto Darkening - Welding Helmet



UNI-MIG UMAFH-2 Auto Darkening Welding Helmet

- Viewing area 96 x 42 mm
- Helmet 9-13 variable
- Reaction time 1-10000 sec
- UV / IR Protection-UPDin 13
- Adjustable sensitivity
- Adjustable Reopening delay 0.1-0.9 sec
- 12 month warranty
- Suitable for MIG, TIG & MMA welding.

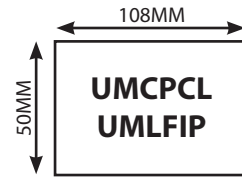
UNI-MIG Helmets - PROTECTIVE LENSES

PART No. / LENSE SIZES



UMLFH - UNI-MIG Flip Front

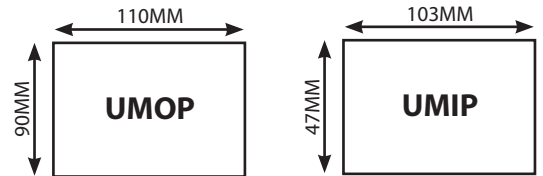
- UMCPL - Plastic clear Lens
- UMLFIP - Glass Lens
- SHADE 8 Lens
- SHADE 9 Lens
- SHADE 10 Lens
- SHADE 11 Lens
- SHADE 12 Lens
- SHADE 13 Lens



UMBWH / UMGWH / UMAFH-2 / UMAWH - UNI-MIG Auto Darkening / Grinding Welding Helmet

- UMOP - Outer Lens 110mm x 90mm

- UMIP - Inner Lens 103mm x 47mm

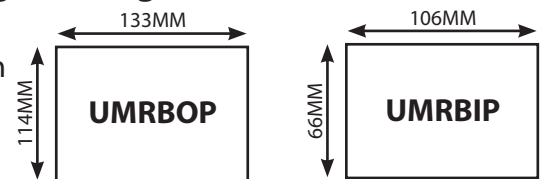


UMRBWH - WIDE VIEW

UNI-MIG Auto Darkening / Grinding Welding Helmet

- UMRBOP - Outer Lens 133mm x 111mm

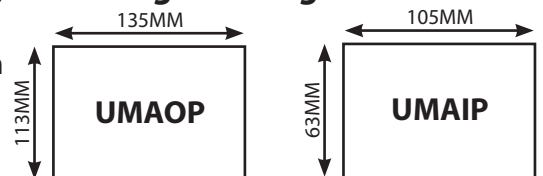
- UMRBIP - Inner Lens 106mm x 66mm



UMAFH - UNI-MIG Auto Darkening / Grinding Welding Helmet

- UMAOP - Outer Lens 135mm x 113mm

- UMAIP - Inner Lens 105mm x 63mm

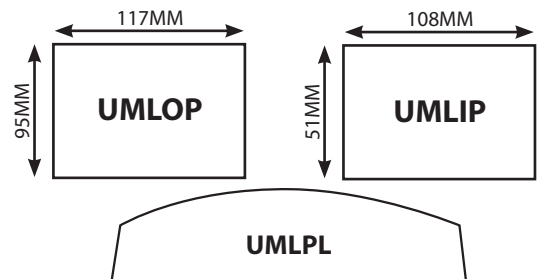


UMALH - UNI-MIG AUTO DARKENING / GRINDING WELDING HELMET

- UMLOP - OUTER LENS 117MM X 95MM

- UMLIP - INNER LENS 108MM X 51MM

- UMLPL - INNER GRINDING LENS



MAGNIFYING LENSES

To Suit:- FLIP FRONT HELMET

- MAGPCL1 - PC lens 1.0 x magnification
- MAGPCL15 - PC lens 1.5 x magnification
- MAGPCL175 - PC lens 1.75 x magnification
- MAGPCL20 - PC lens 2.0 x magnification
- Size:- Outer = 107mm x 50mm
- View Area = 96mm x 40mm

MAGNIFYING LENSES

To Suit:- UMAFH-2 / UMGWH / UMBWH

- MAGUM150 - PC lens 1.5 x magnification
- MAGUM200 - PC lens 2.0 x magnification

Size:- Outer = 108mm x 50mm
View Area = 97mm x 40mm